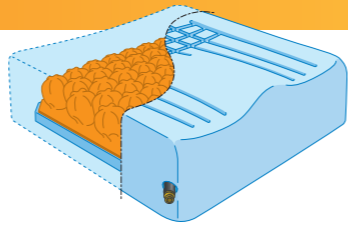


# POLYAIR Comfort

POLYAIR Comfort is an adjustable, anatomically moulded viscoelastic foam cushion with a POLYAIR insert and a foam base. It comes with a choice of standard washable cover or an HD washable cover with welded seams.



## ORDERING CODES

### POLYAIR Cushion (dual compartment) 60mm height

	Cushion & 1 Cover	Cushion & 2 Covers	Spare Cover	Min-Max Weight kg / lbs
36x36cm (14x14in)	P301C36361HW	P301C36362HW	P501PA3636W	20-60 / 44-132
40x40cm (16x16in)	P301C40401HW	P301C40402HW	P501PA4040W	30-80 / 66-176
40x43cm (16x17in)	P301C40431HW	P301C40432HW	P501PA4043W	30-90 / 66-198
40x46cm (16x18in)	P301C40461HW	P301C40462HW	P501PA4046W	30-110 / 66-242
43x43cm (17x17in)	P301C43431HW	P301C43432HW	P501PA4343W	30-110 / 66-242
43x46cm (17x18in)	P301C43461HW	P301C43462HW	P501PA4346W	30-120 / 66-264
46x40cm (18x16in)	P301C46401HW	P301C46402HW	P501PA4640W	40-120 / 88-264
46x46cm (18x18in)	P301C46461HW	P301C46462HW	P501PA4646W	40-140 / 88-308
51x46cm (20x18in)	P301C51461HW	P301C51462HW	P501PA5146W	40-160 / 88-352
51x50cm (20x20in)	P301C51501HW	P301C51502HW	P501PA5150W	40-180 / 88-396
56x46cm (22x18in)	P301C56461HW	P301C56462HW	P501PA5646W	60-230 / 132-507
61x50cm (24x20in)	P301C61501HW	P301C61502HW	P501PA6150W	80-270 / 176-595

### POLYAIR Cushion (single compartment) 60mm height

	Cushion & 1 Cover	Cushion & 2 Covers	Spare Cover
40x40cm (16x16in)	P301CM40401HW	P301CM40402HW	P501PA4040W
43x43cm (17x17in)	P301CM43431HW	P301CM43432HW	P501PA4343W
46x46cm (18x18in)	P301CM46461HW	P301CM46462HW	P501PA4646W

### POLYAIR Cushion (dual compartment) 100mm height

	Cushion & 1 Cover	Cushion & 2 Covers	Spare Cover	Min-Max Weight kg / lbs
40x40cm (16x16in)	P302C40401HW	P302C40402HW	P502PA4040W	40-80 / 88-176
40x43cm (16x17in)	P302C40431HW	P302C40432HW	P502PA4043W	40-90 / 88-198
40x46cm (16x18in)	P302C40461HW	P302C40462HW	P502PA4046W	40-120 / 88-264
43x43cm (17x17in)	P302C43431HW	P302C43432HW	P502PA4343W	40-110 / 88-242
46x40cm (18x16in)	P302C46401HW	P302C46402HW	P502PA4640W	40-120 / 88-264
43x46cm (17x18in)	P302C43461HW	P302C43462HW	P502PA4346W	40-120 / 88-264
46x46cm (18x18in)	P302C46461HW	P302C46462HW	P502PA4646W	40-140 / 88-308
51x46cm (20x18in)	P302C51461HW	P302C51462HW	P502PA5146W	40-160 / 88-352
51x50cm (20x20in)	P302C51501HW	P302C51502HW	P502PA5150W	40-180 / 88-396
56x46cm (22x18in)	P302C56461HW	P302C56462HW	P502PA5646W	60-230 / 132-507
61x50cm (24x20in)	P302C61501HW	P302C61502HW	P502PA6150W	80-270 / 176-595

### POLYAIR Cushion (single compartment) 100mm height

	Cushion & 1 Cover	Cushion & 2 Covers	Spare Cover
40x40cm (16x16in)	P302CM40401HW	P302CM40402HW	P502PA4040W
43x43cm (17x17in)	P302CM43431HW	P302CM43432HW	P502PA4343W
46x46cm (18x18in)	P302CM46461HW	P302CM46462HW	P502PA4646W

Additional Pump/Gauge for POLYAIR single/dual compartment cushions: P624A

### POLYAIR Comfort with HD Covers

	Cushion & 1 Cover	Cushion & 2 Covers	Spare Cover
42x42cm (16x16in)	P301CMC42421HF	P301CMC42422HF	P502PA4343F
45x42cm (18x16in)	P301CMC45421HF	P301CMC45422HF	P502PA4642F
45x46cm (18x18in)	P301CMC45461HF	P301CMC45462HF	P502PA4646F

### POLYAIR Comfort with Standard Covers

	Cushion & 1 Cover	Cushion & 2 Covers	Spare Cover
42x42cm (16x16in)	P301CMC42421HW	P301CMC42422HW	P502PA4343W
45x42cm (18x16in)	P301CMC45421HW	P301CMC45422HW	P502PA4642W
45x46cm (18x18in)	P301CMC45461HW	P301CMC45462HW	P502PA4646W

Additional Pump for POLYAIR Comfort cushions: P625A



**SYST'AM**

# POLYAIR®

## Major advances in air cell technology!



Rev. 1. May 2022

**SUMED**

Sumed International (UK) Limited.  
Integrity House, Graphite Way, Hadfield,  
Glossop, Derbyshire. SK13 1QH.  
Phone 01457 890980 | Fax 01457 890990  
sales@sumed.co.uk | www.sumedinternational.com

POLYAIR and Laxprene are registered trade marks of SYST'AM

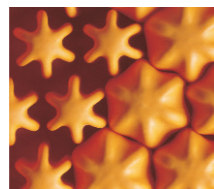
**SUMED**



# POLYAIR®

**Made from Laxprene®. Softer, stronger and over 15x more elastic than neoprene.**

Laxprene® is an amazing material that is incredibly soft, strong and durable.

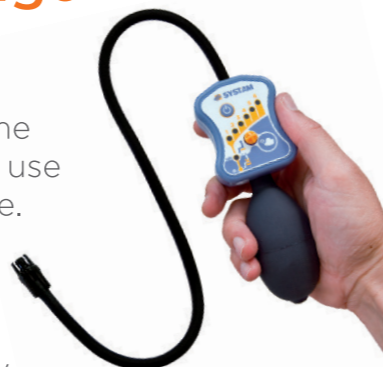


As well as providing incredible immersion, it's less likely to puncture and, if it does, the puncture is unlikely to develop into a tear.

**Fast and accurate inflation with click-fit pressure gauge (included).**

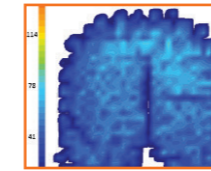
POLYAIR cushions come with their own easy to use click-fit pressure gauge.

Once clicked on the valve, it takes no time at all to inflate the cushion and accurately optimise pressure.



**A premium range of air-cell cushions offering outstanding pressure relief, exceptional value and highly innovative features.**

## Incredible pressure relieving properties



POLYAIR cushions feature an innovative honeycomb design which offers incredible immersion and stability.

They are made from Laxprene® which has been specifically developed for softness, durability and tear resistance.

What's more they're manufactured using a dipping process for the ultimate in flexibility and elasticity.

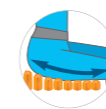
## The POLYAIR principles



POLYAIR cushions quickly adapt to the user's shape helping to increase surface area and reduce interface pressure.



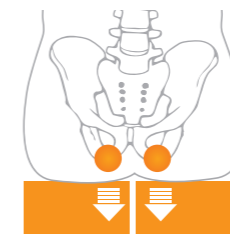
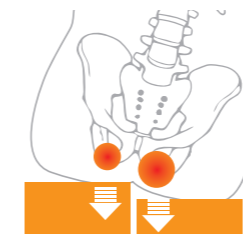
Air can pass easily around cell exterior to help reduce maceration and minimise tissue breakdown.



Cells move independently to help reduce shearing and provide exceptional comfort.

## Dual Compartment option

We have a wide range of cushions with two compartments (left and right). These can be particularly useful in rectifying pelvic imbalances as well as offering greater stability and comfort.



- Suitable for very high risk users or those who already have a pressure ulcer (category I-IV)
- Single and dual compartments
- 60mm and 100mm cell heights
- Honeycomb design for increased stability and maximum immersion
- Choice of 1 or 2 washable covers
- Simple to repair
- 3 year warranty against manufacturing defects
- Incredible value for money



Available in a wide range of sizes

**IMPORTANT.** To detach the pump from the valve, pinch the 2 black clips on either side to open the clips away from the valve. Once this is done, gently pull the pump away from the valve to detach. **Failure to open the clips before pulling the pump could result in damage to the valve.**